

# Secondary school process for building community guardianship work in the neighbourhood

The Youth Now project developed and implemented a 'School Safety Audit' to determine the nature and extent of serious youth violence connected to a local school. This approach was based on adapted tools taken from previous schools-based research within the CS Network developed by the 'Beyond Referrals' project on Harmful Sexual Behaviours in school settings.

This tool outlines how to build community guardianship connected with one secondary school. To carry out a full School Safety Audit you would need to use all tools related to this process in conjunction with each other. They are available [here](#) on the CS Network.



## Initially identify the key catchment areas for the school

Most young people who attend the school in the Youth Now pilot came from five very diverse areas of the city. It is important to recognise that each catchment area may have different concerns in relation to safety and harm transitioning from their residential area to the school e.g:

- How do they travel? (on foot, by bus/tram, private car)
- What spaces/places do they use before and after school?
- Are there key/common routes, spaces/places all students use?

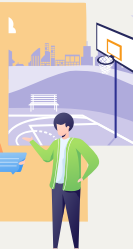


## Carry out a 'School Safety Audit'

See separate 'School Safety Audit tool' explaining the full process [here](#)

Carry out surveys and focus groups in school to get the views of the young people.

- What do they think their area is like?
- How safe do they feel in their area?
- What is missing from their area and what support would they like to see in their area?



## Partnership building and meeting with local community guardians

Findings/information from the catchment area and the 'School Safety Audit' are fed back through local partnership meetings and strategy meetings to all relevant partners (e.g. Police, youth service, detached youth team, community safety team, housing, sports/leisure, health projects, district coordinators, local councillors, local community leaders and school).



## Pop-up community event held with school/on school grounds

Plan with all local partners a 'Youth Pop-up' Event on a Saturday, creating numerous activities for local young people. This can take place on external playground/sports field areas and would be advertised through school, community buildings and local organisations.

Possible activities: sport, football, netball, rugby, boxing, music, dance, food, arts and craft and anything else the young people have suggested. There could also be stalls where carers are invited, plus other local health and support services/groups to give young people relevant information and sources of support/advice.

During the actual day all partners have the opportunity to engage directly with the young people who attend, to gain insight on how they feel about the area they live in and potential issues around how they experience safety and harm in their neighbourhood, especially travelling to and from school to home.

## Aims & Outcomes

**School:** Stronger connections to local partners in the immediate neighbourhood who can be enlisted as community guardians.



**Detached youth team:** Can better identify issues/incidents happening in that specific area and days and times these most often happen. This would allow them to utilise their staff more effectively.

**Youth service:** Could source appropriate diversionary activities for young people in these specific areas and provide these activities on days and times when most issues occur. This could be done in conjunction with all local partners.

**Police:** Help to forge a better relationship between young people and local police.

**Community/neighbourhood:** Potential to identify committed local partners who can be supported towards stronger community guardianship for young people.

## Key benefits

- The young people would feel they have been listened to;
- All partners will be targeting key areas where there are issues and be able to pool their resources effectively; this could result in more partnership working, help young people feel safer, and decrease anti-social behaviour and criminal behaviour.



Once set up this would then be evaluated at each partnership, local strategy/intelligence meeting and appropriate changes made to the youth offer when necessary, both in this school and the immediate neighbourhood/community.