

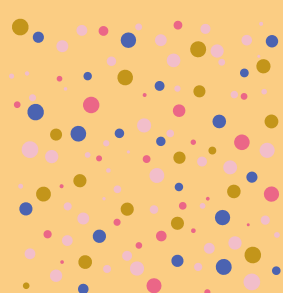
SECURING SAFETY

A study into the scale and experience of relocation in response to extra-familial abuse.

POLICY RECOMMENDATIONS



DEPARTMENT FOR EDUCATION



We recommend that the Department for Education work with ADCS to establish the best route for establishing oversight of the numbers of children placed in out of area care due to extra-familial harm (EFH), and any potential variance within these figures, to guide commissioning and planning decisions locally and nationally.

OFSTED



We recommend that Ofsted identify ways to examine the use of out-of-area placements in response to EFH during relevant inspections, paying particular attention to whether children's social care (and during JTAs, their partners):

1. Have oversight of the number of children placed out-of-area due to EFH
2. Have taken a strategic position on when and why out-of-area placements are used; and that local decision-making reflects this position
3. Have developed, and routinely consider, alternative means of protecting children from EFH prior to, and during, out-of-area placements
4. Support children in out-of-area placements to maintain meaningful relationships with family members, peers and professionals whom they trust
5. Support children to continue to access to education while out-of-area
6. Are able to develop plans to return to their families/communities if they wish to do so
7. Actively and meaningfully engages children and their families in decisions to use, or end, out-of-area placements

NATIONAL IRO MANAGERS PARTNERSHIP (NIROMP)



We recommend that the NIROMP disseminate the Securing Safety resources to their members so that they can apply them in their own IRO teams when reviewing care plans associated to EFH. As part of this process NIROMP could identify if any members are interested in establishing an interest group in respect of EFH so that the efficacy of the resources, and any areas for practice support, are identified.