

# Contextual Safeguarding Academics Network

MEMBER BIOS

### Doireann Larkin

Programme Convenor for the MA in Understanding Domestic Violence & Sexual Abuse at Goldsmiths University

*I use Contextual Safeguarding while teaching on the module 'Adolescents as Victims and Perpetrators of Abuse'. I use this framework as a structure for the module working through risk and protective factors associated with family, schools, peer groups, neighbourhoods and the interventions appropriate for each context. We use the case studies in 'Abuse Between Young People' as teaching tools and students practice carrying out a neighbourhood assessment in their own areas. I am planning to begin a participatory research project next year around the impact of the adolescent peer group on healthy or unhealthy romantic relationships within that social group.*



---

### Dr Nhlanganiso Nyathi

Principal Lecturer and Course Leader at Anglia Ruskin University

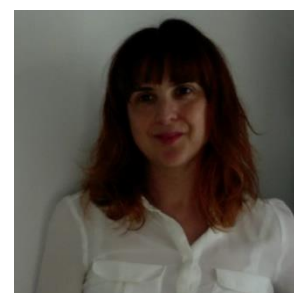
*I'm interested in Contextual Safeguarding because I intend to make it a key theme in my social work teaching and in particular to Social Work with Children and Families module which I am Course Leader for. I am also in the process of developing an MSc in Safeguarding course for non-social work professionals and I want Contextual Safeguarding to be a key theme in the Safeguarding Children module for this course. Going forward, I would like to be involved in collaborative research with other members of the Contextual Safeguarding Academic Network*



---

### Dr Gemma North

*I am a qualified social worker and substance misuse worker. I have published from doctoral research on child protection social work with emotional abuse carried out at the University of Sussex. Writing, teaching and research interests include child abuse and neglect, emotions, emotional abuse, substance misuse, participatory research methods, neurodiversity, organisational culture, childhood and youth, and gender.*



**Dr Carmen Chan**

Clinical Psychologist and Service Lead at Oxford Health

*I lead a small, specialist team in Oxfordshire CAMHS working with young people and families who have experienced sexual abuse or exploitation. For many of the young people in our team, they have experienced multiple forms of child exploitation. Much of our work is working in consultation with multi-agency colleagues to support, often bringing in a Contextual Safeguarding framework to these consultations. I help lead the Oxfordshire training on trauma-informed practise, which often includes the importance of taking a Contextual approach. I'm one of the founding members of the Oxfordshire Sexual Violence and Exploitation Network – a network of services that cross the third sector, local authority, and health services to provide a Contextual approach to working with child exploitation. I regularly teach on topics like 'safeguarding' and 'the impact of childhood trauma' on Clinical Psychology Training Courses, as well as colleagues across mental health and social care. I have experience conducting and supervising qualitative and quantitative research.*

---

**Iain Brennan**

Professor of Criminology at University of Hull

*I am interested in Contextual Safeguarding because it is a useful way for thinking about and modelling the complexity of social lives.*

**Alicia Kidd**

Postdoctoral Researcher at The Wilberforce Institute, University of Hull

*I have used contextual safeguarding to develop CPD training on situations of Child Criminal Exploitation for front line practitioners. Emphasising that the environment in which a person is in is as significant in leading to exploitation as the characteristics of the victim(s) and perpetrator(s).*

**Anna Pytlowana**

Clinical Psychologist for NHS

*I am interested in contextual safeguarding as I hope to incorporate it into my practice moving forward.*

---

### Tracey Hanson

Criminologist and Founder of The Josh Hanson Trust

*I am interested in Contextual Safeguarding because our focus is working to find positive solutions to youth violence and victimisation. We recognise that harm can be experienced in schools, neighbourhoods, amongst peers directly and indirectly i.e. social media, outside of the family home. We feel that these harms need to be identified and addressed within a framework that promotes safety and wellbeing while encouraging the wider community to be involved too. Working collectively to provide a safer, inclusive environment to help reduce harm is a priority and we welcome the opportunity to learn more. We are interested in the wider conversation and our aim is to build on what we already discuss with local councils, schools, and the police by sharing Josh's story and our knowledge to date.*



---

### Nina Maxell

Senior Research Fellow at CASCADE, Cardiff University

*I am interested in Contextual Safeguarding as my research interests include adolescence and social care workforce development with the overall aim of improving the outcomes for children and young people. As a chartered psychologist and Senior Research Fellow at the Children's Research and Development Centre (CASCADE), I have recently conducted research into child criminal exploitation and the prevention of youth violence. I will be examining how contextual safeguarding can be used in practice in future work. This will include the identification of factors that facilitate or hinder the adoption of this approach.*

---

### Sarah Learmonth

PhD Researcher in Media and Communications at LSE

*I have used Contextual Safeguarding to extend my Masters research on bail use in rape cases from the survivor perspective*

*My research aims to assess the influence of criminal justice discourse on rape survivors' conceptualisations of trust and expectations of safety in public and private spaces against first-person survivor experiences of current justice protection mechanisms. I am also exploring how this discourse influences responses to survivors' claims by friends, family and by professionals such as social care, educational settings or workplaces.*

---

### Emily Setty

Lecturer in Criminology at The University of Surrey

*I'm interested in Contextual Safeguarding because I am keen to explore how young people's experiences in their youth sexual and relational cultures, in particular of risk and harm, can be responded to both proactively and reactively in a holistic way that takes into account the broader context to the issues they face. I am currently working with schools to explore how we can better understand young people's needs and work in a youth-centred way to reduce risk and harm, and my research suggests that it is important to understand the contextual contingencies of young people's experiences.*



---

### Farrah Quintyne

Lead Social Worker at University College London Hospital

*I'm interested in Contextual Safeguarding because it absolutely makes sense. Keeping young people safe outside of their family is really important and it's essential for those who understand about CS to share ideas with those who may not be familiar with this approach. Those of us working with adolescents have opportunities to make a difference to them whether it's role modelling that someone cares, signposting them to services or support that can help them navigate their way through their adolescences or enable them to develop trusting relationships with professionals which could reduce their risk and enhance their resilience and protective factors.*

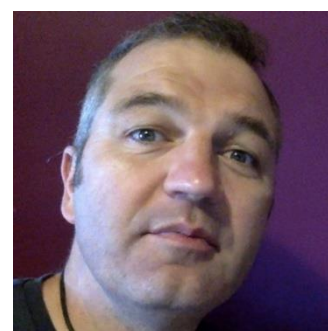


---

### Dr Jon Symonds

Lecturer in Social Work with Children and Families at The University of Bristol

*I am Programme Director for the MSc in Advanced Social Work with Children and Families where participants have expressed a strong interest in understanding more about contextual safeguarding. I teach the relevant content on the programme and have a particular interest in learning more through the network so that it enhances the quality of my teaching on the topic. However, the topic also aligns with my research interests in social work practice, working with fathers and thinking systemically so I would be interested in collaborations for future research bids on these topics.*



### Dr Maureen Taylor

Lecturer in Criminology at Glasgow Caledonian University

*I am a Lecturer in criminology. I originally became involved in CSE research, policy development and practice in 2006, sitting on an ACPO working group for a number of years and involved with the UKHTC and the NWG Network in its early years. My PhD explored the networks involved in child sexual exploitation (victim and offender) and included discussion of contextual safeguarding and the potential for social network analysis to contribute to contextually based responses to safeguarding children and young people. My interest in contextual safeguarding also extends to practice as I am an accredited trainer, delivering training to professionals in CSE and tackling violence in teenage relationships.*



---

### Heidi Dix

Senior Lecturer in Social Work at The University of Suffolk

*I'm interested in Contextual Safeguarding because I teach social work at the University of Suffolk and am the lead for practice learning and include contextual safeguarding as part of the students' skills workshops, as well as incorporating it within the children and families module. I am also a part-time operational manager within a statutory youth justice service which is beginning to explore contextual safeguarding and am interested in the use of this linked to criminal exploitation.*



---

### Natasha Rennolds

PhD Researcher at The University of East Anglia

*I'm interested in Contextual Safeguarding because I am intrigued by how people 'do' relationships with reference to the nuances and little things in everyday practices that support young people. My PhD research, using a Posthumanist approach, is exploring the nature of how young people and adults build and sustain relationships within different environments with a view to understanding what learning takes place that allows for safe, trusting relationships. This interest arises from over 25 years' experience working with young people in both school and community-based provision, and with a current role in Independent Scrutiny for Norfolk Safeguarding Children Partnership.*



### Emma Rees

PhD Student at the Faculty of Health, School of Public Health and Social Work at Queensland University of Technology

*I'm interested in Contextual Safeguarding because The Queensland Government education, health, child protection structures and police currently do not respond adequately to harm to adolescence (in my opinion). I am conducting research with adult survivors of child sexual exploitation in Queensland to understand harm to adolescence better across Queensland government structures. I am keen to pilot Contextual Safeguarding as part of my research on the Sunshine Coast in Queensland as this approach will likely feature in my research recommendations.*

---

### Dr Brooke Allen

Child and Educational Psychologist at Liverpool City Council and The University of Manchester

*I'm interested in Contextual Safeguarding because in my previous role as a social worker I have understood the limitations of the traditional child protection system, particularly in respect of the response to extra-familial harm. In my current role I use Contextual Safeguarding to inform my thinking and support others to understand and respond to children and young people who have been harmed. I work across education settings including the Virtual School and have recently completed my doctoral thesis exploring the role of the Educational Psychologist within a Contextual Safeguarding framework.*



### Michael Carver

Lead Nurse for Violence Reduction at Barts Health NHS Trust

*I am working in collaboration with NHS London to develop an NHS specification for delivery of a hospital-based violence reduction programme. Evidence suggests that provision of trauma caseworkers in a hospital setting reduces the rate of re-attendance to hospital with further injuries. Many of the principles of working within this programme involve understanding experience of historical trauma, and also of assessing safeguarding risks that may exist outside the home setting.*

*I am about to start my PhD at QMUL which is looking at identifiable behaviours such as impulsivity and negative urgency and how this might relate to violence exposure.*

---

### **Pippa Goodfellow**

Director at Alliance for Youth Justice (formerly the SCYJ) and doctoral student at The University of Bedfordshire

*I am interested in Contextual Safeguarding because at the Alliance for Youth Justice we advocate for and with children and young people to positively influence youth justice. We are keen to develop our understanding and contribute to developments in contextual safeguarding, to push for systems and services that respond to young people appropriately and minimise the criminalisation and imprisonment of children. In my doctoral studies into girls in the youth justice system, I am exploring the relationship between shifting systemic responses to girls and their influences on the levels of use of penal custody.*



---

### **Dr Angie Bartoli**

Principle Lecturer Social Work/School Student Experience Manager at Nottingham Trent University

*I am interested in Contextual Safeguarding to enhance understanding in terms of practice and as a educational tool. I have research, publication and training experience in supervision and am interested in how Contextual Safeguarding can be incorporated within supervision*



---

### **Prof Kieran McCartan**

Professor of Criminology & Sociology at University of the West of England, Bristol

*I am interested in contextual a safeguarding as it ties in with my work around desistence, Adverse Childhood Experiences, trauma informed care, Risk management, and community integration. In addition, I am a multi-disciplinary researcher with an in public health approaches to crime prevention.*

---

### **Dr. Prospera Tadam**

Assistant Professor of Social Work at United Arab Emirates University, UAE

*My interest in contextual safeguarding is around peer groups (that are not really peer groups). By this I mean 13 year olds who look 18+ and being in the company of adults, so to peak and the safeguarding issues arising from those 'friendships'. I am also interested in contextual safeguarding within faith groups.*

---



### Paul Sutcliffe

Lead Social Worker and DSL at Pivot Group

*I'm interested in Contextual Safeguarding because as DSL and lead Social Worker for Pivot Group I am responsible for the safeguarding of our young people across 4 sites from primary through to the end of KS4 across 4 different Local Authorities. This year due to the increasing level of need we are looking at completely overhauling the safeguarding model in school to adopt a contextual approach working with our young people.*



---

### Michelle Lefevre

Professor of Social Work and PI of the Innovate Project at The University of Sussex

*I have been project lead for the evaluation of the implementation of Contextual Safeguarding in Hackney – part of the DfE-funded Innovation Programme (Wave 2). I am the lead for The Innovate Project, which is a four-year pan-UK collaborative project researching innovation to address extra-familial risks and harm experienced by young people; Contextual Safeguarding is one of the three approaches we are researching in the project and Carlene/Bedfordshire is one of our partners (see [www.theinnovateproject.co.uk](http://www.theinnovateproject.co.uk)). I am on the project board for the Contextual Safeguarding Scale-up Project.*



---

### Dr Stephen Cowden

Senior Lecturer in Social Work at University of Gloucestershire

*I'm interested in Contextual Safeguarding in a Social Work context. Social Work safeguarding interventions often focus on the identification of 'troubled families' instead of looking at the wider social circumstances in which young people find themselves in. Contextual Safeguarding is really useful for the way it allows us to see safeguarding in a more ecological way. The Contextual Safeguarding model is mostly used for tackling peer on peer abuse and Child Sexual Exploitation. I am interested in how this approach could be used in anti-radicalisation work. Radicalisation is highly contextual, as individuals communicate with others across numerous social fields to impose their supremacist beliefs, often with a disproportionate impact on women and girls.*



### David Orr

Team Leader – Young People’s Service (YPS) at City of Edinburgh Council

*My interest in contextual safeguarding stems primarily from my work with adolescents over the course of more than a decade in the field of youth justice and the recognition that the traditional child protection model is a blunt tool when addressing the complex risks and needs that stem from young people who are vulnerable in different places and spaces (offline and digital) to pre-school children. I am particularly interested in the emerging challenges in Scotland relating to child criminal exploitation (CCE) and developing appropriate responses informed by a commitment to children’s rights.*



---

### Sherwyn Sicat

Practice Lecturer at Brunel University

*I have used Contextual Safeguarding in my previous role as a Child Protection Advisor and Child Protection Lead for the Contextual Safeguarding Pilot in the local authority I worked in. As a lecturer I am interested in keeping up to date with Contextual Safeguarding issues to ensure that thinking and learning about these issues are embedded in my teaching. This then allows a new generation of social workers to enter the work force already thinking differently and understanding practical methods regarding supporting young people and their families around such issues.*

---

### Sian Oram

Senior Lecturer in Women’s Mental Health; Director, Violence, Abuse, and Mental Health Network at Kings College London

*I’m interested in Contextual Safeguarding with respect to child victims of modern slavery and human trafficking, including reducing the risk of re-trafficking.*



---

### Simon Green

Reader in Criminology and Victimology at University of Hull

*I’m interested in Contextual Safeguarding because I am supervising several PhD students in the areas of CSE and CCE and am working with police and LAs to develop training around aspects of modern slavery and victimisation. I am also chair of an EU funded international network of victimologists and in the process of establishing up a small research group to explore victimisation and resilience amongst children and young people.*



### Alhassan Abdullah

Researcher (PhD student) at The University of Hong Kong

*My interest broadly covers the community context in child maltreatment prevention and child protection in general. For the past 5 years, I have researched the relevance of the community context in the protection of children, especially the role of kith and kin in the provision of alternate care for parentless children. My current PhD research focuses on informal neighbourhood mechanisms that addresses and prevent child maltreatment issues in Ghana.*



---

### Lynne Cairns

Doctoral Researcher at Durham University

*I'm interested in Contextual Safeguarding because I am undertaking a PhD using participatory research methods with young men who displayed harmful sexual behaviour (HSB) in their childhoods, as 'experts through experience', to learn about their perception of 'risk' and 'protection'. I aim to generate knowledge about social contexts to better understand how their behaviours are shaped sociologically and contextually and understand how the interplay within and between social contexts enhances risk or protection. Based in Dundee, Scotland I will be supervised by Professor Simon Hackett and Dr Josie Philips at Durham University and will collaborate with Scottish Violence Reduction Unit (Police and Scottish Government).*

---

### Jodie Low

Senior Lecturer & Youth Worker at University of Northampton & Free 2 Talk CIC

*I am interested in Contextual Safeguarding because as a Youth Worker contextual safeguarding offers an approach to address the issues I have observed in our disadvantaged communities. For young people; it is an empowering approach which places them as experts in co-producing multiagency responses. As a Lecturer and researcher, I want the importance of this approach embedded through an academic evidence base in professional Youth and Community Practice. I am interested in researching how contextual safeguarding can be implemented to address the violence and exploitation our young people are facing within their communities; schools and online.*



### Monsur Ahmed

Exploitation and Serious Youth Violence Co-ordinator at London Borough of Tower Hamlets

*I am a Social Worker / NVR Practitioner who is also training as a Systemic Family Therapist. I have previously worked as a youth / community worker specialising in working with groups/gangs & the risks associated. I am also a trustee of a UK registered charity with an international reach that focuses on social care, community projects & working with those who are terminally ill. I would like to continue my academic journey alongside my practice with a focus on how CSG can be included in long-term work / therapy with children and families. In addition to this, I am looking into the implementation NVR in communities; I have observed how NVR and CSG principles overlap and would like to lead the work in this area.*

---

### Kristine Hickle

Senior Lecturer in Social Work

*My interest in Contextual Safeguarding aligns with broader research interests in rights-based, participatory and trauma-informed approaches to safeguarding young people from extrafamilial risk and harm, and has grown through involvement in several recent research projects. I am a co-investigator on the Innovate Project, a four-year pan-UK collaborative project researching innovation to address extra-familial risk/ harm experienced by young people- and Contextual Safeguarding is among the three approaches we are researching (Carlene/Bedfordshire as project partners.) I have been part of the evaluation team for the Contextual Safeguarding project in Hackney and am on the advisory board of Bedfordshire's Securing Safety project.*



### Tilia Lenz

Lecturer Practitioner Consultant at Pan-Dorset and Wiltshire Teaching Partnership and Bournemouth University

*My practice background as a CP Social Worker and Manager has offered me insights in how our current legal system is not support children and families when extra familial harm occurs. In my role as a Lecturer Practitioner Consultant, I am bridging the gap between practice and academia and am keen to develop networks to learn and develop Contextual Safeguarding approaches across geographical and service boundaries. I currently teach Law and Social Policy at BU and teach on CPD courses as well as offering learning and research opportunities in Local Authorities.*



### Joanna Emma Foster BA(Hons) Oxon, PGCert

Managing Director at fabtic (plus frontline caseworker, supervisor and trainer) / Master's student at the University of Cambridge (Institute of Criminology)

*I'm interested in Contextual Safeguarding because my work and research are in juvenile firesetting behaviour. Understanding fires set by children and teenagers requires an insight into the areas where young people live, thereby allowing an understanding of how fire is modelled e.g. in areas of high social deprivation deliberately set fires are more common. Online influences are also a consideration with regard to what images of fire children and teenagers can access. Therefore, an important question in this frontline work is when did a child first and/or last see a fire, not simply when did they last set a fire.*



---

### Chloe Weaver

Doctoral Researcher / Trainee Educational Psychologist at Cardiff University

*I am interested in Contextual Safeguarding because I was part of the Scale Up Project as a Contextual Safeguarding Champion. During this time, I delivered training and facilitated community meetings to explore extra familial harm in local areas, with the support of the Contextual Safeguarding Team. Within my current role I am particularly interested in the use of language and extra-familial harm and how this impacts perceptions of young people and consequently, the support they receive. I am also interested in how we can create safe spaces and peer group norms for young people within and around schools*



---

### Nikki Rutter

Doctoral Researcher at Durham University

*I'm interested in contextual safeguarding because my research explores childhood violence towards parents within the home and this doesn't fit within existing child safeguarding frameworks. How children can be considered 'beyond parental control' and where that exists at the emotional level is of importance to me.*



### Chizzy Chapman

Doctoral student, Trainee Educational Psychologist at Bristol University

*I was involved with one of the scale-up contextual safeguarding projects as a contextual safeguarding trainer and member of the steering group. My background has been working within a Multi-systemic therapy team and completing a foundation in systemic theory and practice, so I am particularly interested to see how contextual safeguarding approaches can work across systems. Moving away from the individual towards considering interventions and outcomes across contexts, such as peer group or school. I am keen to keep my knowledge regarding contextual safeguarding up to date as I move into my new role within Educational Psychology.*



---

### Alisa Wilson

Detective Chief Inspector, Vulnerability and Investigations for Lancashire Police

*I lead teams undertaking safeguarding and investigating Child Abuse, Rape and Serious Sexual Offences and Domestic Abuse. Effective safeguarding requires a contextual holistic approach. I recently completed quantitative research into the identification of risk and harm in child exploitation during a Masters Degree in Applied Criminology at the University of Cambridge. I am seeking to practically implement the research findings within Lancashire to obtain better outcomes for exploited children. I am particularly interested in ACES, poly-victimisation and associated trauma behaviours.*



---

### Rebecca Hartley

Trainee Educational Psychologist at University of Southampton

*I'm interested in Contextual Safeguarding because my previous career in teaching and pastoral care made me aware that this area should be a high priority for research. Those working with young people can be unprepared and under-resourced when confronted with the challenges of safeguarding- and I'd like to feel more prepared and knowledgeable myself.*

---

### Kim Detjen

PhD Student at University of East London

*I'm interested in Contextual Safeguarding because I teach social work students, primarily focussing on children and families social work and I believe contextual safeguarding is an important way forward in how social workers work alongside children and families. Providing a safe space for children, young people and their families to be able to speak about the risks that they may be faced with is crucial in understanding how to minimise these risks. I am also involved in some independent social work and will be using contextual safeguarding in my work with children and families.*



---

### Janelle Rabe

PhD student at Durham University

*I'm interested in the Contextual Safeguarding framework because it aligns well with my research on understanding the role of young people in preventing sexual violence against children. I am especially interested in building on the empowerment lens of the framework that seeks to cultivate the collective responsibility of the community. By learning more about the application of the framework, I aspire to elevate the critical role of young people in contextual safeguarding actions and the prevention of sexual violence in various settings and relationships.*



---

### Emma Ball

PhD Student & Research Assistant at Liverpool John Moores University

*After spending time working as a practitioner working with children and young people, my PhD focusses on the implementation of policy into practice for multi-agency safeguarding regarding child exploitation. It will explore perspectives of practitioners working in statutory organisations such as local authority, police, health and education as well as voluntary and charity sector practitioners. In addition it hopes to gain an understanding into the insights and perspectives of multi-agency services from children, young people and families who have experienced exploitation. I believe incorporating Contextual Safeguarding into children's safeguarding is crucial to address child exploitation and central to multi-agency working.*



### Cait Jobson

Postgraduate Researcher at Durham University

*I'm interested in Contextual Safeguarding because I am a first year PhD student looking at young LGBTQ+ people and their experiences of help-seeking around domestic violence and abuse. I am particularly aiming to look at how young people interact with their peers and communities throughout the help-seeking process. I seek to use participatory methods in my research to recognise the agency of young people. I am a volunteer youth worker at LGBT youth Scotland and recognise the importance of contextual safeguarding particularly around the extrafamilial harm that my PhD primarily focuses on, and I would love the opportunity to learn more from the expertise in this network.*

---

### Alishya Dhir

Teaching Fellow in Criminology/4th year PhD student

*My PhD research concerns image-based sexual abuse amongst young people. Whilst researching I have come across information created by the contextual safeguarding team concerning harmful sexual behaviour, which was very useful for my research. I believe I could learn a lot from others in the network.*

---

### Joel Nathan Price

Independent Reviewing Officer – Cardiff Council | PhD Social Work Researcher – Uni of Bristol.

*I am interested in contextual safeguarding because it opens the doors to safeguarding in a holistic way. It enables social workers and professionals alike to “think outside the box” and ensure that the most vulnerable are supported and protected to be the best versions of themselves. As a social worker/IRO I often use contextual safeguards in supporting children and their families and would love to expand my knowledge and application of.*



### Sophie Shall

PhD Student at Glasgow Caledonian University

*I have previously used contextual safeguarding when I worked as a social worker in Hackney to create safety plans with young people who had been arrested as a result of being exploited within their communities. I am currently interested in the possible role of contextual safeguarding when thinking about radicalisation as I'm currently studying the impact of the Prevent policy on social work and in the communities in which it operates.*